



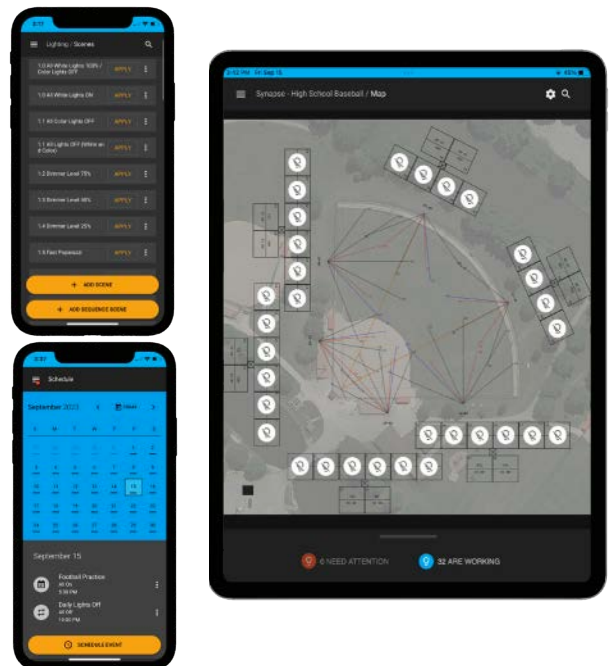
Easily manage your sports lights with Techline Sports Lighting and Synapse SimplySnap, the easy-to-use scalable lighting management solution that just works.

Our software is designed with core capabilities that help simplify managing outdoor sports lighting systems of all sizes. The SimplySnap user interface with Base Cloud and Full Cloud Access options make it easy to make adjustments to groups of lights, or the entire lighting system. The built-in scheduling features can be used to schedule the lights for practices, evening games, and special events. Scenes allow multiple preset lighting configurations to be activated for special lighting needs. Add Action Lighting or Full Color RGB to create a more exciting fan experience after scores or special moments during the game.

SIMPLE USER INTERFACE

With SimplySnap, users can access and control their lighting system from anywhere using a web browser on any computer or smart device.

The responsive design and intuitive user interface works great on laptops, tablets, or phones for quick access and real-time updates to the system. Our intelligent lighting system scales easily to support small sites with a single sports lighting application or installations with several sports fields across multiple locations.



APPLICATIONS



- + Municipal Sports Complexes
- + K-12 Sports Fields
- + Collegiate Sports Fields
- + Professional Sports Fields

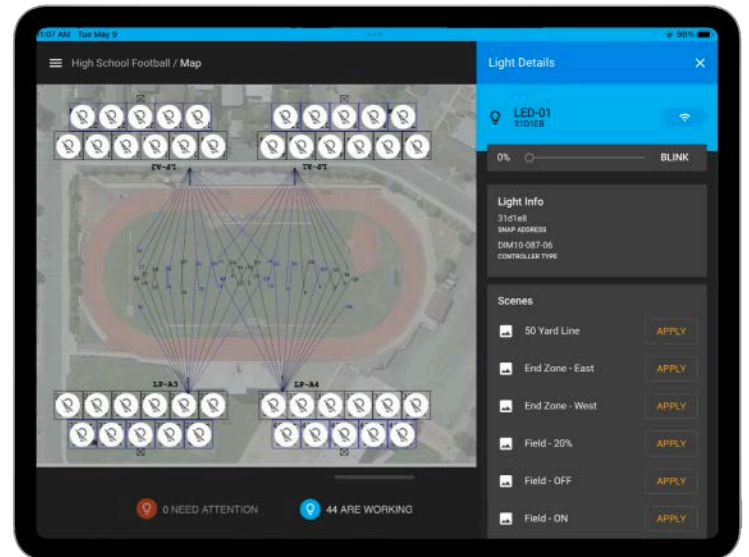
SOFTWARE FEATURES

USER INTERFACE

The list-based* or map-based** interface of SimplySnap provides fast and easy access to your sports lighting needs from anywhere. Adjust lights, activate scenes, or create schedules all from a user interface that was designed to be easy to learn and easy to use.

*Base Cloud access subscription

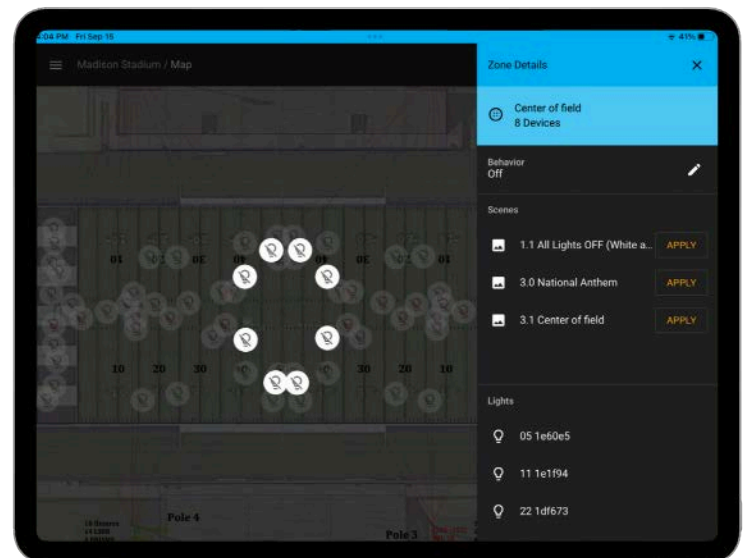
**Full Cloud access subscription



ZONES***

Lights can be organized and managed in easy-to-understand zones, supporting multiple sports fields or specific areas (End zone, Court 3, Softball Field 2, etc.).

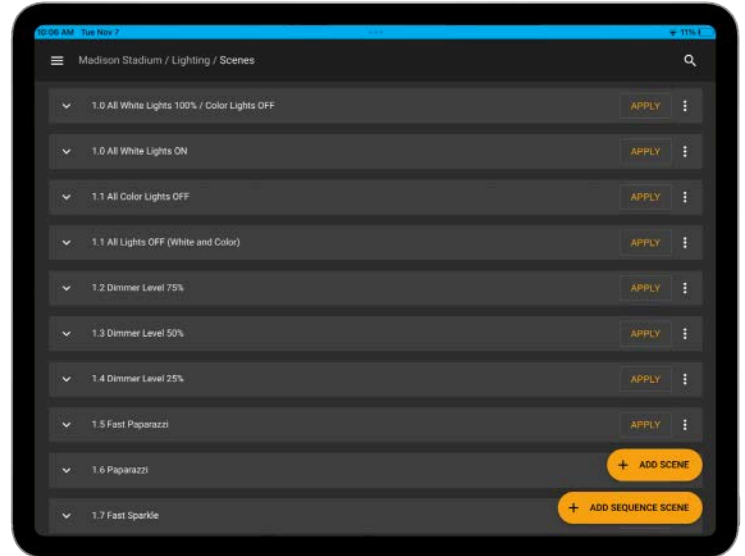
***Certain Zones require upgraded pre-wiring. Confirm with Sales prior to purchase



SOFTWARE FEATURES

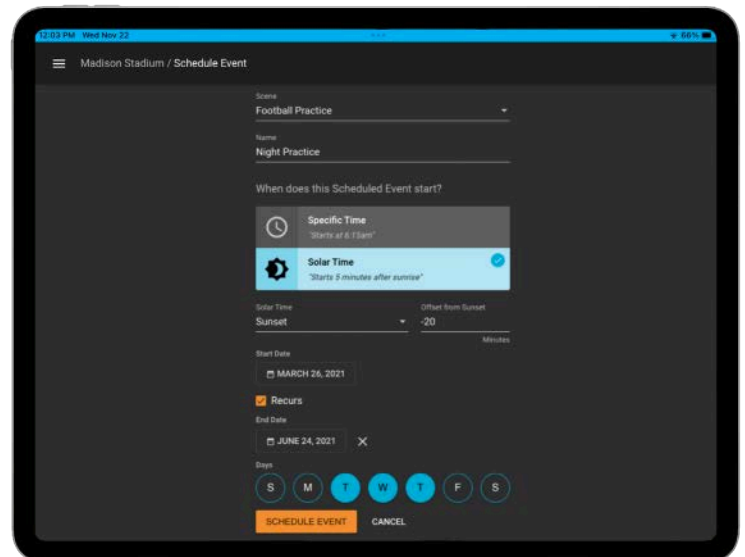
SCENES

Create a behavior or a group of behaviors for one or more control zones for lighting. Once created, these scenes can be applied with a single click or set to a schedule.



SCHEDULES

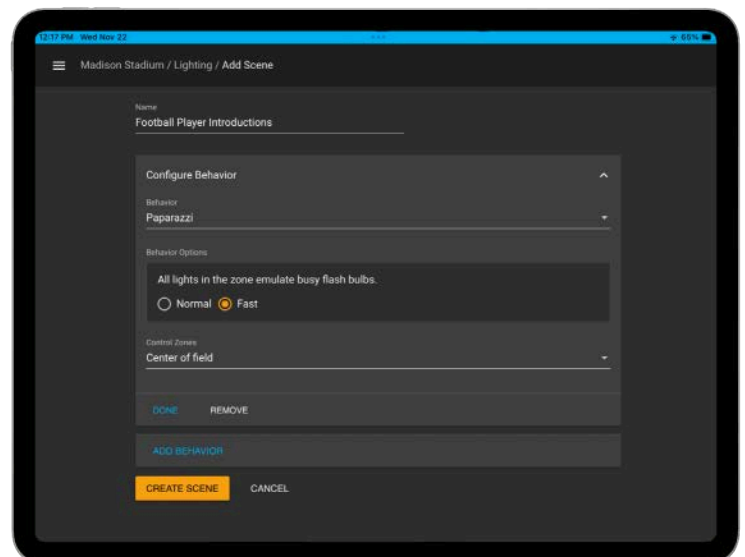
The built-in calendar feature allows scenes to be scheduled for one-time events or for recurring events over several years. Create schedules for practices and games for the entire season to automate control.



ACTION LIGHTING

Action Lighting* sends rapid dimming/on/off commands to groups of lights to create exciting light shows during sporting events. Create and save these for events like scoring, player or team entrances, halftime introductions, and other special events.

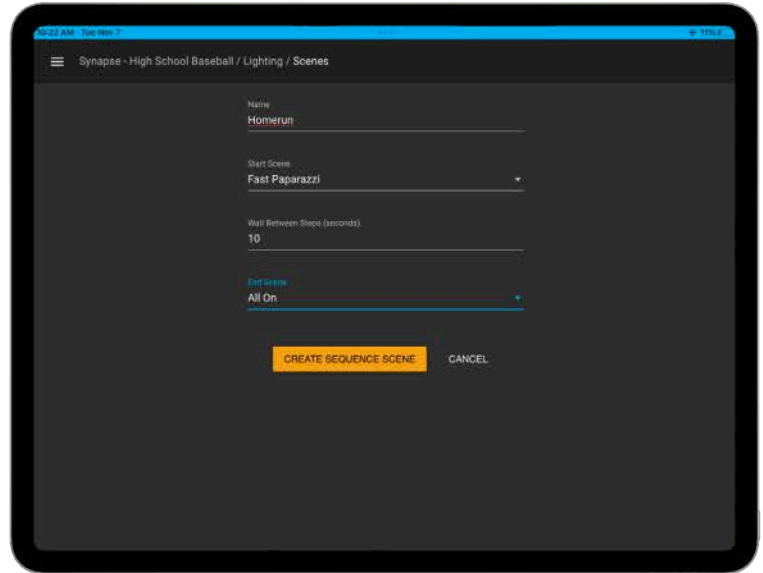
Note* - Requires compatible Synapse embedded Controller and a one-time license. Can be accessed with Base or Full Cloud subscription.



SOFTWARE FEATURES

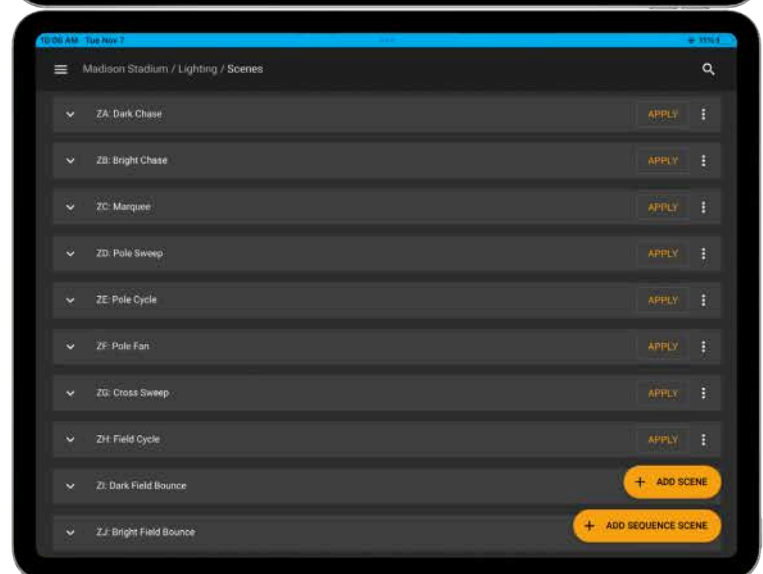
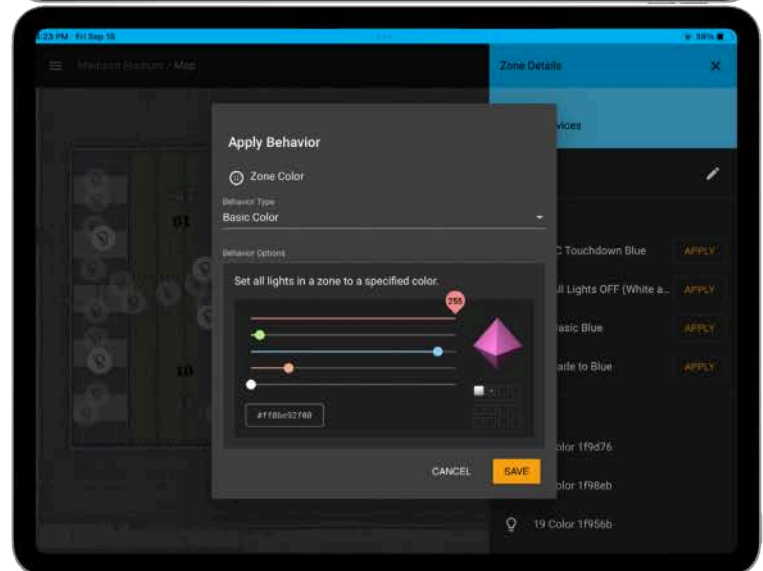
ACTION LIGHTING/SEQUENCED SCENES*

Sequenced scenes empower you to create a sequences of actions, or ‘Behaviors,’ set to unfold over specific time intervals. Each Sequenced Scene is easily programmed with a starting scene, a duration of pause, and an end scene to ensure a smooth operations. Use a dynamic effect like fast paparazzi for 10 seconds then switch to a ‘stadium on’ scene—all without manual intervention. Sequenced Scenes brings an additional layer of flexibility and control to your space or venue management.



RGBAW COLOR

With RGBAW Color** control, users can apply a static or dynamic colored scene that matches the team colors or a custom color that matches the theme of a scheduled event.



*Action Lighting/Sequenced Scenes available with Base Cloud or Full Cloud Subscription.

**RGBAW Full Color features require Full Cloud Subscription.

Techline SimplySnap Access Options

Base Cloud Remote Access

- List Based view of lighting system, summarized by Site Controller
- Instantly available; accessible anywhere with internet access and device with a browser
- Action Lighting controls
- Admin level access only - can create/delete scenes, schedule and/or turn on/off/dim
- Includes cellular service for 5 or 10 years, no additional hardware required (if quality cell coverage is available)

Full Cloud Remote Access

- Improved user experience over Base Cloud with customizable and intuitive, map-based view of entire lighting system
- Progressive web app (operates within device's browser) with homepage shortcut
- Multiple users with permission based access (i.e. turn on/off/dim vs. create/delete scenes and schedules)
- Single interface for multiple-gateway sites (multi-field, and/or large area sites)
- Action Lighting and full color RGB controls

HARDWARE COMPONENTS

CBSSW-450-002 Site Controller



The CBS Site Controllers are key components of every SimplySnap lighting control solution from Synapse. Site Controllers coordinate communication out to all the Synapse-enabled devices that are part of the mesh network. They manage system configuration details, gather power and status information, apply zone behaviors, store scheduled events, generate notifications, and update controllers when new features or enhancements are added.

Each CBS also includes a 5 button switch that can be programmed and used to activate over 25 saved Scenes for fast direct control of different zones or the entire sporting complex.

WSW-02, WSW-08 and WSW-02-IP

Indoor and Outdoor Wireless Switches

